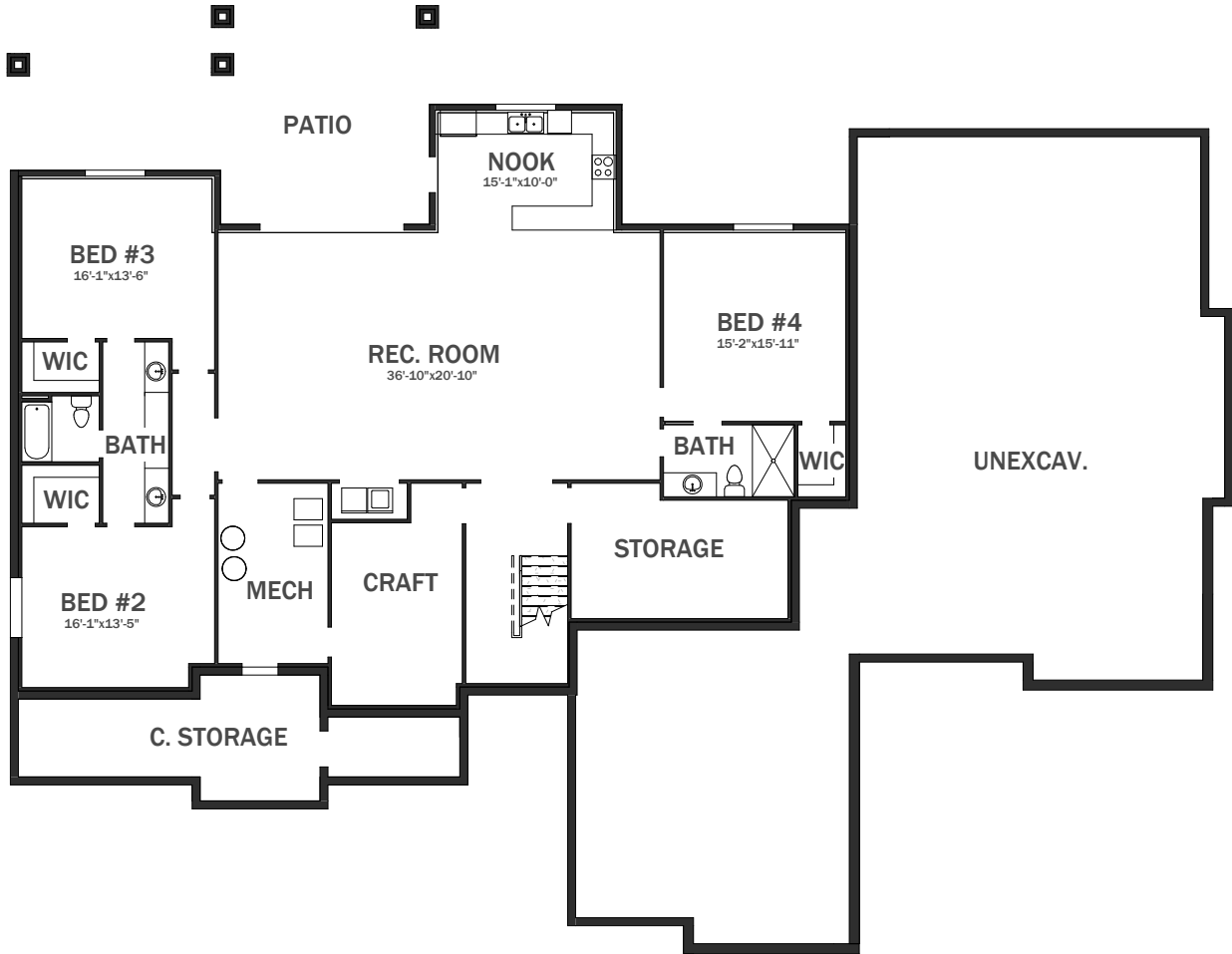


**MAIN FLOOR**



# LONDON



## BASEMENT

### SQUARE FOOTAGE

MAIN	2839 SF
BASEMENT	2817 SF
<b>TOTAL</b>	<b>5657 SF</b>

WIDTH/DEPTH 102'/70.5'

### FEATURES

BEDROOMS	5
BATHROOMS	4.5
GARAGE	4 CAR

### WALL HEIGHTS

MAIN	10'/12'
BASEMENT	9'